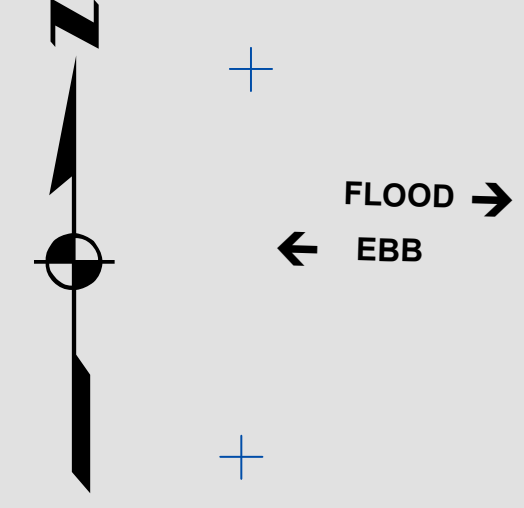


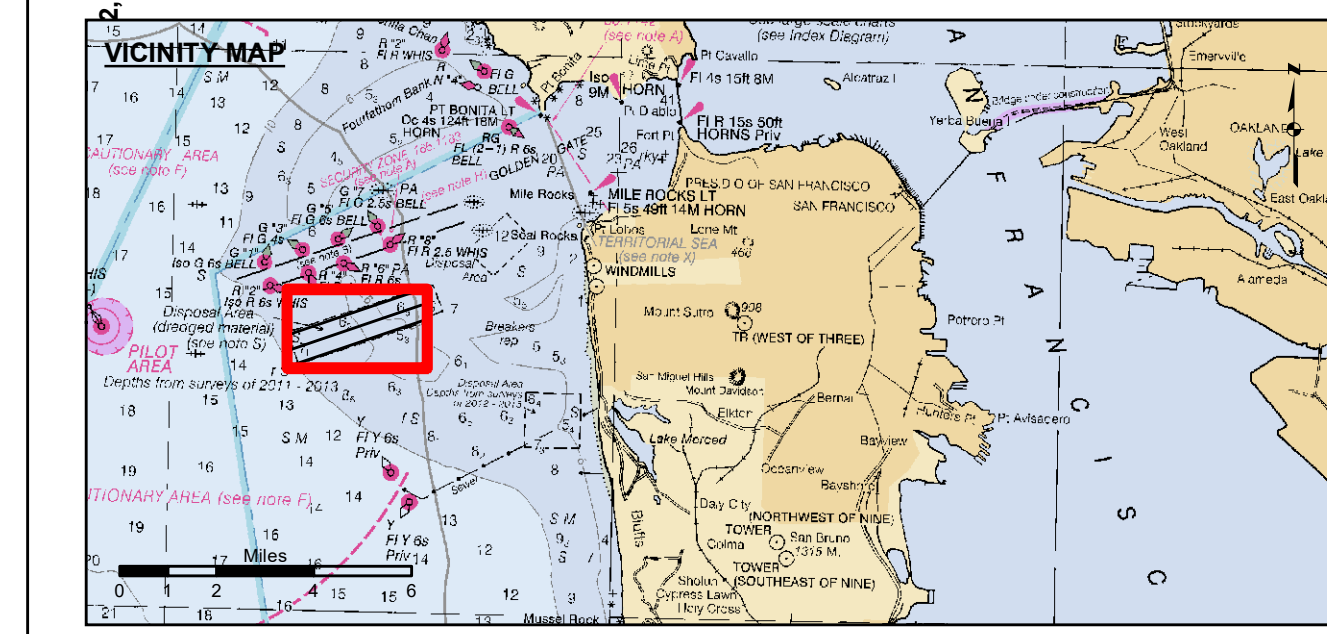
**PRELIMINARY ISSUE**  
THIS PLAN ISSUED FOR  
ADVANCE INFORMATION ONLY

0 500 1,000 2,000 3,000  
Feet  
1 inch = 500 feet  
Relative Scale (ANSI D 22x34)  
1:6,000  
Absolute Scale



CENTERLINE ANGLE POINTS - NAD83		
CHANNEL	NORTH	EAST
C1	5948424.8258	2100405.0160
C2	5962509.9258	2105198.5160

CHANNEL ANGLE POINTS - NAD83		
CHANNEL	NORTH	EAST
A	5947978.6258	2101983.2160
B	5948871.1258	2098826.8160
C	5962061.8258	2106725.9160
D	5962958.0258	2103671.1160



- Federal Navigation Channel
- Shoaling Area
- Placement Area
- Anchorage Area
- Wreck Area
- Submerged Wreck
- Angle Point
- Beacon, General
- Obstruction Point
- Navigation Buoy
- Navigation Buoy
- Shoalest Sounding\*
- Contours
- 50
- 40

NOTES:  
DRAWING NOT TO BE USED FOR NAVIGATION, ONLY CHANNEL CONDITION AT DATE OF SURVEY.  
THE LOCATION OF ALL NAVIGATION AIDS ARE BASED ON INFORMATION PROVIDED BY THE U.S. COAST GUARD. BUOY LOCATIONS REPRESENT THE POSITION OF THE SINKER ONLY.  
SURVEYED BY THE CORPS OF ENGINEERS.  
SOUNDINGS ARE TAKEN BY FATHOMETER AND ARE SHOWN TO THE NEAREST FOOT AND TENTHS OF A FOOT.  
SOUNDINGS ARE BASED ON THE DATUM OF MEAN LOWER LOW WATER AT THE LOCALITY, NAVD 88.

PLANE GRID AND COORDINATES ARE BASED ON LAMBERT PROJECTION, ZONE III NAD 83, CALIFORNIA, AS DESCRIBED IN SPECIAL PUBLICATION NO. 235, PUBLISHED BY NATIONAL OCEAN SURVEY.  
PROJECT DEPTH IS 55 FEET AT M.L.L.W.  
SOUNDINGS ARE BASE TIDE GAUGE LOCATED AT THE HYDE STREET PIER, SAN FRANCISCO, CALIFORNIA.  
VERTICAL CONTROL BENCHMARK "Q-481" USC&GS DISK ELEV. 19.54 FT. M.L.L.W.  
HORIZONTAL CONTROL COAST GUARD D-BEACON.

**US Army Corps of Engineers**  
San Francisco District  
1455 Market Street  
San Francisco, CA 94103

**DISCLAIMER**  
The United States Government furnishes this information as a service to the public and does not warrant, express or implied, the accuracy, completeness, or reliability of the data. The user is responsible for the results of any use of the data for other than its intended purpose. The user is responsible for the results of any use of the data for other than its intended purpose. The user is responsible for the results of any use of the data for other than its intended purpose.

Prepared Under the Direction of	Chart Date:	July 30, 2021
LT COLONEL C.E. DISTRICT ENGINEER	Designed by:	
Subplot: PDT	Plotted by:	
Hydro Survey Team Leader	Checked by:	PDT
Chief, Hydro Survey Section	Drawn by:	PDT
Approved: Chief, Construction Branch		

CALIFORNIA  
SAN FRANCISCO HARBOR  
DISPOSAL SITE - SF 8  
CONDITION SURVEY  
27 JULY 2021

**Sheet Reference Number**  
1 of 1